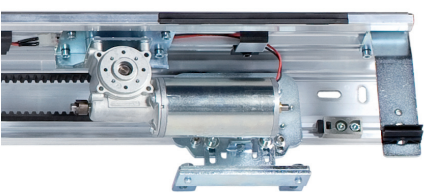


version  
**DOUBLE MOTOR**

**FAAC**

**940 SM**

230 V ac (+6%-10%) 50 (60) Hz  
100 W  
100%  
24 V dc motor with encoder  
VP x 2 + 100 mm  
by electro-driven toothed belt  
adjustable (two leaves) 20÷180 cm/s  
adjustable  
adjustable from 0 to 30 s  
150 N (self-learning adjustment)  
adjustable (two leaves)  
from 10%±90% of total travel  
standard  
standard (can be excluded)  
IP 23 (for indoor use only)  
-20°C ÷ +55°C



**PROGRAMMING DISPLAY**

Main functions

Entering of access password	Opening speed adjustment
Closing speed adjustment	Anti break-in function management
Pause times adjustment	Anti-crushing adjustment
Diagnostic display	Weekly calendar management

Management of interlock with or without memory  
Selection of battery operation logics  
Configuration of 3 outputs on the control unit  
Configuration of 2 emergency inputs on the control unit  
Display of number of cycles carried out  
Management of 5 daily time slots



Programming display

**SD KEEPER FUNCTIONS KEYBOARD**

Main functions

Manual	Open
Automatic	Partial opening
One way	Night
Reset	One way, partial

Throubleshooting through a combination of flashing LEDs  
Operation can be disabled by a jumper or a combination of keys  
Preset for programming display



SD Keeper functions keyboard

**SDK LIGHT**

Main functions

Manual	Open
Automatic	Partial opening
One way	Night
Reset	One way, partial

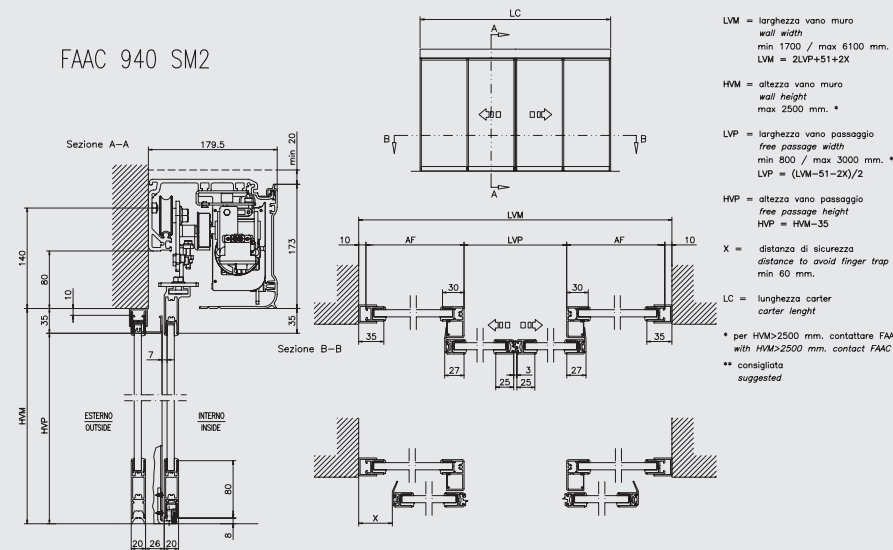
Throubleshooting through a combination of flashing LEDs  
Operation can be disabled by a combination of keys  
Not preset for programming display



SKD Light functions keyboard

**SMALL SECTION PROFILES TK 20**

FAAC 940 SM2



**HEADQUARTERS**

FAAC spa  
Via Calari 10 - 40069 Zola Predosa (BO) ITALY  
Tel. +39 051 61724 - Fax +39 051 758518  
info@faac.it - www.faacgroup.com

**FAAC SUBSIDIARIES**

FAAC AG  
Tel. +41 41 8713440  
Fax +41 41 8713484  
Altdorf, Switzerland  
www.faac.ch

FAAC FRANCE  
Tel. +33 4 72218700  
Fax +33 4 72218701  
Corbas, France  
www.faac.fr

FAAC GMBH  
Tel. +49 8654 49810  
Fax +49 8654 498125  
Freilassing, Germany  
www.faac.de

FAAC MIDDLE EAST BRANCH  
Tel. +971 42146733  
Fax +971 42146734  
Dubai Airport Free Zone, UAE  
www.faac.ae

F.A.A.C. SA  
Tel. +34 91 6613112  
Fax +34 91 6610050  
Madrid, España  
www.faac.es

FAAC UK LTD.  
Tel. +44 1256 318100  
Fax +44 1256 318101  
Basingstoke Hampshire, UK  
www.faac.co.uk

FAAC AUSTRALIA PTY LTD  
Tel. +61 2 87565644  
Fax +61 2 87565677  
Homebush - Sydney, Australia  
www.faac.com.au

FAAC NORD  
Tel. +33 1 69191620  
Fax +33 1 69191621  
Massy, France  
www.faac.fr

FAAC INDIA PVT. LTD  
Tel. +91 120 3934100/4199  
Fax +91 120 4212132  
Noida - Delhi, India  
www.faacindia.com

FAAC POLSKA SPZO.O.  
Tel. +48 22 8141125  
Fax +48 22 8142024  
Warszawa, Polska  
www.faac.pl

F.A.A.C. SA Delegación Cataluña  
Tel. +34 93 4362000  
Fax +34 93 4368225  
Barcelona, España  
www.faac.es

FAAC BENELUX  
Tel. +32 50 320202  
Fax +32 50 320242  
Brugge, Belgium  
www.faacbenelux.com

FAAC GE.S. M.B.H.  
Tel. +43 662 8533950  
Fax +43 662 85339520  
Wals - Siezenheim, Austria  
www.faac.at

FAAC INTERNATIONAL INC.  
Tel. +1 307 6351991  
Fax +1 307 6328148  
Cheyenne, USA  
www.faacusa.com

FAAC SCANDINAVIA AB  
Tel. +46 36 376860  
Fax +46 36 370780  
Bankeryd, Sweden  
www.faac.se

FAAC SHANGHAI  
Tel. +86 21 68182970  
Fax +86 21 68182968  
Shanghai, China  
www.faac.com.cn



908470004 - Rev. 12 - 500 - Zucchini - 09/2009. The descriptions and illustrations contained in the present brochure are not binding. FAAC reserves the right to undertake product technical modifications without prior notice.



**SERIES 940**  
Automations for sliding doors

**FAAC**  
Simply automatic.

**FAAC**



## Telescopic automations for sliding doors

with single or double motor for very heavy leaves and continuous duty

- An automated system line designed to meet all your needs
- 940 SM max. capacity 110+110 or 140 kg each leaf
- 940 SMD with double motor max. capacity 180+180 or 250 kg each leaf
- 940 SMA and SMDA with self-supporting head profile for fixing the automated system between two walls or an aisle
- 940 SMT Telescopic with two or four sliding leaves.

■ Reliability  
Thanks to the careful choice of high technology mechanical and electronic components Faac Series 940 SM-SMD-SMT automations for sliding doors are certified for over 2,000,000 opening and closing cycles and have no limits in the frequency of use.

Motor and microprocessor electronic control unit undergo a severe quality control program before delivery.

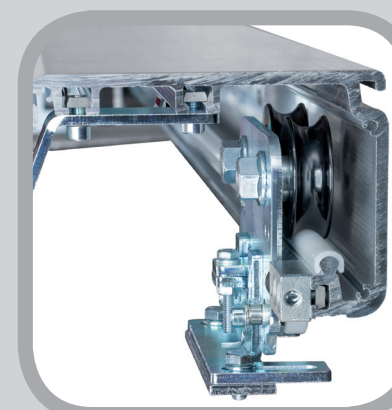
■ Safety with no compromises  
Thanks to their "self-learning" function, the Series 940 automations automatically set the opening and closing forces according to the friction and the leaf weight in conformity with the relevant safety standards.  
In the event of a power cut, buffer batteries (optional) with charge control guarantee 100% operation for thirty minutes.

■ Excellent logics  
The operation logics can be selected with the SD Keeper or SDK Light functions keypads, which also signal and display any faults through their diagnostics functions.

The assembly and installation procedures of Series 940 have been conceived and designed to optimize the installation times thanks to the wide working area, the easy fitting of trolley/belt, the concept of the drive module and the limit switches on the support profile. Moreover, the easy-to-assemble housing can be locked in the open position and therefore it can be easily manoeuvred by one operator. In this way, installation or maintenance costs are even lower.



### 3 Trolleys with steel wheels and teflon rail



- 1 Motor with electrical lock
- 2 Microprocessor control unit
- 3 Trolleys with steel wheels and teflon rail
- 4 Toroidal transformer and emergency batteries
- 5 Drive trolley
- 6 Knob for manual release
- 7 Eyelets for a fast mechanical installation

### Accessories

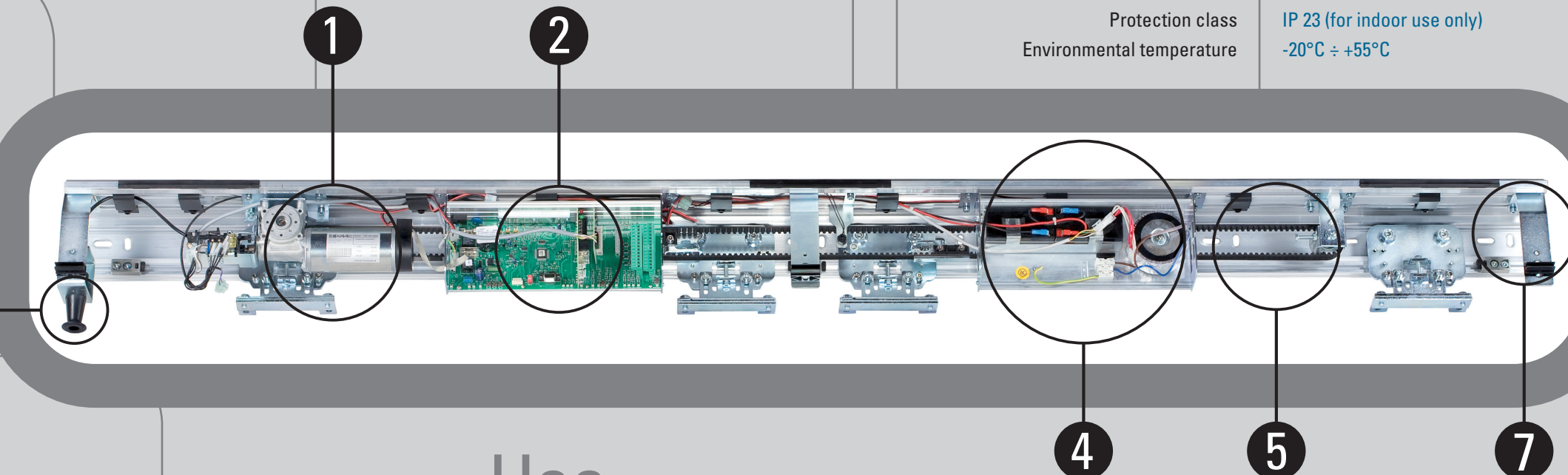
- Self-supporting head profile
- Electro-mechanical lock with internal release
- Miniswitch GLS photocell
- Infra-red passive sensor
- Microwave radar
- Wall-mounted and flush-mounted keyswitches T20/T21 with emergency release devices
- Profiles for glass leaf fitting
- Lock monitor with activation of indicator-lights or buzzers in the event of a lock malfunction
- Break-out anti-panic kit (only for SM-SMA version)**
- The emergency batteries with charge control board guarantee the automated system to operate for 30 minutes on continuous use**

### Automatic adjustments

- Open and closed positions identified
- Measurement of leaf weights and friction
- Selection of optimum speed, acceleration and deceleration
- Photocell test
- Anti-crushing safety at 150 N

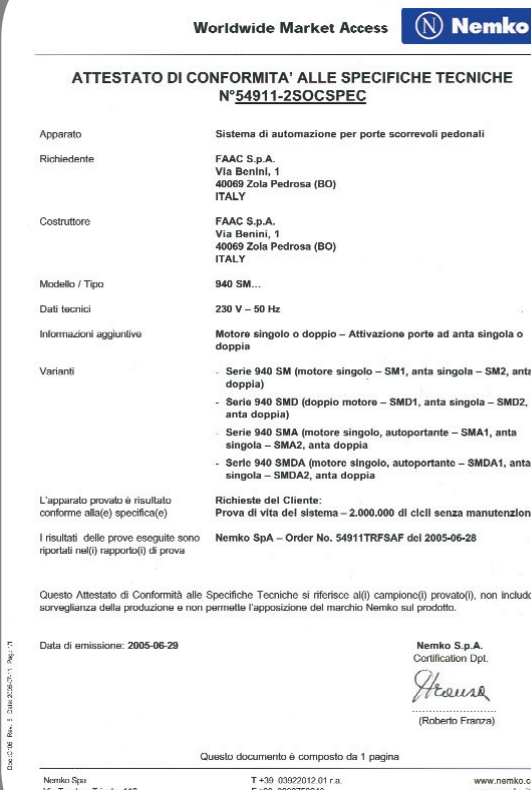
### Technical specifications 940 SM

Electric power supply	230 V ac (+6%-10%) 50 (60) Hz
Power consumption	100 W
Frequency of use	100%
Drive unit	24 V dc motor with encoder
Head profile length	VP x 2 + 100 mm
Drive	by electro-driven toothed belt
Opening/closing speed	adjustable (two leaves) 20÷180 cm/s
Emergency opening/closing speed	adjustable
Pause time	adjustable from 0 to 30 s
Static force	150 N (self-learning adjustment)
Partial opening	adjustable (two leaves)
Anti-crushing device	from 10% ÷ 90% of total travel
Photocells fail-safe	standard
Protection class	IP 23 (for indoor use only)
Environmental temperature	-20°C ÷ +55°C



### Use

Model	Leaf	Free passage width (mm)	Leaf max. weight (kg)	Self-supporting (head profile length mm)
940 SM1	single	700÷3,000	140	NO
940 SM2	double	800÷3,000	110 + 110	NO
940 SMA1	single	700÷3,000	140	YES (max. 3,000)
940 SMA2	double	800÷3,000	110+110	YES (max. 3,000)
940 SMD1	single	700÷2,900	250	NO
940 SMD2	double	800÷3,000	180 + 180	NO
940 SMDA1	single	700÷2,900	250	YES (max. 3,000)
940 SMDA2	double	800÷3,000	180 + 180	YES (max. 3,000)
940 SMT2	single tel.	1,100÷3,000	110 + 110	NO
940 SMT4	double tel.	1,400÷4,000	60+60+60+60	NO
940 SMTA2	single tel.	1,100÷3,000	110 + 110	YES (max. 3,000)
940 SMTA4	double tel.	1,400÷4,000	60+60+60+60	YES (max. 3,000)



Automated system certified for 2,000,000 continuous cycles without maintenance

